

Fishing Goes High Tech

(NAPSA)—Anglers say new types of marine electronics have made finding that spot where the fish are biting about as easy as baiting a hook.

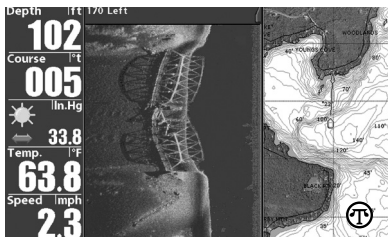
Even better, much of the latest technology has become surprisingly affordable. One reason is that many new-breed fish-finding devices employ LCD displays, which continue to drop in price and are more energy efficient. As a result, even many part-time anglers can afford to invest in the latest gear used by the pros.

So which devices perform best? Here's a review from a Web site for aspiring anglers and boaters called takemefishing.org. It features the largest existing database of places to fish in the U.S.

• **Fish Finders**—These handy devices use sonar to indicate water depth and display the contour of the bottom's surface. Although they have been around for years, new technology is making them sharper, thinner and more affordable.

The advent of color screens makes it even easier to locate fish and pinpoint their precise depth. Handheld models fit in a shirt pocket and sell for less than \$100. The new "side imaging" sonar can render images of fish, structure and the bottom with photolike clarity; another example of how tech helps you see where fish are hiding.

• **Global Position System (GPS) Navigation**—Nowhere have the advances in marine electronics been greater than in GPS navigation. A GPS unit uses orbiting satellites to pinpoint your physical location to within a few



High-Tech Tackle—Even in murky water, the latest fishing sonar technology captures details of this sunken bridge with photolike clarity.

feet. Store the waypoints marking a good fishing hole and you can return to the same hot spot over and over again.

Many GPS units can be linked to a boat's autopilot navigation, making it easier to focus on the fishing part of fishing. Insert a chip with a chart for a specific region and you can navigate safely in just about any kind of weather. Although the more expensive models (\$250 and up) can display better graphics, basic handhelds offer the same accuracy for around \$100.

• **Temperature Sensors**—Water temperature is an important indicator of fish activity. Fish are attracted to edges where cooler and warmer waters meet. Temperature sensors can help anglers locate those edges. The latest models (\$100 and up) include a retracting cable that lets you test the temperature at any depth up to 50 feet.

Any way you slice it, it might not be easier to actually catch fish, but today's tech is making it a lot easier to find them.

For more information, visit www.takemefishing.org.