

# newsworthy trends

## Diamonds Deliver Scoop On Celebrity Style

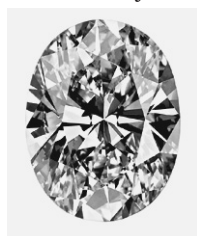
(NAPSA)—What do diamond engagement rings say about the celebrities who wear them?

While any diamond shape is an expression of beauty, each fancy shaped diamond reflects a certain style.

The most expressive fancy shaped diamonds are the marquise, heart, teardrop (also known as pear) and oval. Now seen on the fashion runways, in magazines and on the fingers of celebrities, their popularity stems from a woman's desire to showcase her individuality.



**Fancy diamond shapes reflect individual style and personality, making them a favorite with several celebrities.**



For example, the luxurious oval-shaped diamond conveys an impression of luxury, regardless of how it is worn. Fun-loving women who

often let their true wild side shine through are drawn to this diamond shape.

A sparkling example is Toni Braxton, who wears a beautifully symmetrical engagement ring, which she designed herself on [www.adiamondisforever.com](http://www.adiamondisforever.com), with an oval-shaped center stone flanked by heart shaped side stones, totaling 4.5 carats.

Whitney Houston's engagement ring also features a stunning 4-carat oval-shaped center stone with trillions on the sides.

Heart-shaped diamonds beautifully and simply reflect a relationship that is meant to last "happily ever after."

Although the heart is feminine and delicate, its spectacular shape captures all the attention it deserves, because it is difficult to cut. Ever the romantic, Joan Collins wears an old-mine, heart-shaped, cushion cut solitaire in an antique setting.

There is nothing understated about the marquise-cut diamond.



This dramatic, elongated diamond shape exudes confidence and passion. Catherine Zeta-Jones sports an engagement ring with a dazzling

10 carat marquise-cut diamond set sideways.

Victoria Beckham, a.k.a. "Posh Spice", also prefers the marquise and wears a 3-carat diamond solitaire flanked by trillions.

The teardrop (or pear) shape remains timeless, elegantly conveying both intimacy and excitement.

When set in a ring, the point of the diamond is typically worn facing outward. Singer Jessica Simpson wears a 4-carat, pear-shaped center stone, flanked by trillions.

Fancy shape diamonds do more than express devotion—they captivate the imagination and allow women to showcase their unique style and individual personality, making them a true favorite among celebrities.

