



Prostate Cancer And Sexual Function

(NAPSA)—The National Cancer Institute estimates 240,890 new cases of prostate cancer in the United States in 2011. Advances made in the treatment and management of this disease are important to be aware of.

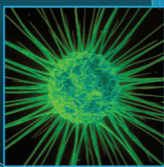
A study recently reported in the *Journal of the American Medical Association* noted the success of a new model to predict return of sexual function following surgery or radiation therapy for prostate cancer.

*America's Trusted Source
For Identifying Top Doctors*

CASTLE CONNOLLY

**OC AMERICA'S
TOP DOCTORS®
FOR CANCER**

7th Edition



A CASTLE CONNOLLY GUIDE

A new edition of a respected book can mean help and hope for many.

“We are proud that the lead author of this study is one of the 2,600 physicians selected for inclusion in our new, 7th ed. of *America's Top Doctors® for Cancer* and online at our website www.castleconnolly.com,” said John Connolly, Ed.D., president and CEO of Castle Connolly Medical Ltd., publishers of the guide and online database. “Top hospitals and their top doctors can and do make a difference in the lives of people confronting prostate and other cancers,” said Dr. Connolly.

America's Top Doctors® for Cancer, 7th ed. is available via toll-free number: (800) 399-3627 and at major national bookstores for \$34.95.