

Your Garden

Three Ways To Save This Spring

It's Spring! Time to **Spruce Up** Your Sprinkler System



Go with a Pro

certified by a WaterSense labeled program who can

Design

a water-efficient irrigation system

Install

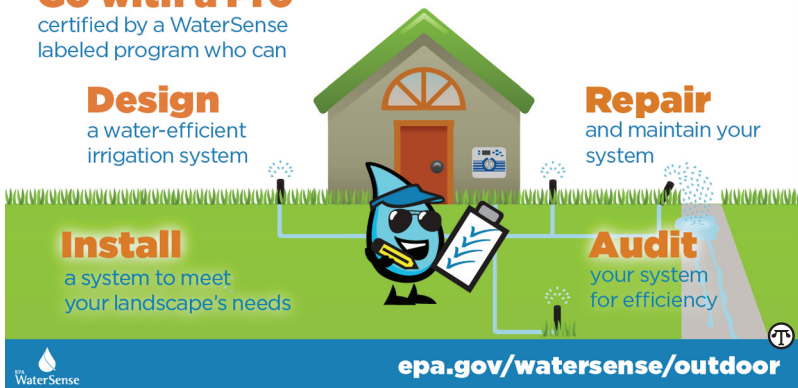
a system to meet your landscape's needs

Repair

and maintain your system

Audit

your system for efficiency



epa.gov/watersense/outdoor

Find a pro certified by a WaterSense labeled program to help make your sprinkler system smarter and save water outdoors!

(NAPSA)—As the weather warms and outdoor watering starts, it's a good time to ask: Are you throwing water—and money—into the wind? Experts estimate that 50 percent of the 9 billion gallons of water we use outdoors every day is lost due to evaporation, wind or runoff caused by inefficient landscape irrigation.

That's why the U.S. Environmental Protection Agency's WaterSense® program is promoting three steps to start saving water this spring:

1. Right Plant, Right Place:

Climates and geography vary nationwide, and your region has distinctive plant species it can naturally support without requiring extra water and fertilizers. Go back to your roots when you're thinking about what to plant in your garden this spring. Visit WaterSense's What to Plant tool (www.epa.gov/watersense/outdoor/what_to_plant.html) to help you choose plants that are right for your climate and require minimal watering. Then group your plants in "hydrozones" according to their water needs to make it easy to irrigate them correctly.

2. Sprinkler Spruce-Up: If you have an inground irrigation system,

spring is the perfect time to spruce it up before warm weather watering starts. Remember this mantra—inspect, connect, direct and select: Inspect systems for clogged, broken or missing sprinkler heads; examine the points where the sprinkler heads connect to pipes or hoses for breaks; direct water away from the pavement to apply water only to the landscape; and select a smart WaterSense labeled irrigation controller, which uses local weather conditions to determine when and how much to water your yard.

3. Go With a Pro: Irrigation professionals certified by a WaterSense labeled program can help you design, install, maintain or audit your irrigation system. Find a pro near you using WaterSense's Directory of Certified Professionals (at www.epa.gov/watersense/findapro) to see if your system could distribute water more efficiently to maximize its performance and maintain a healthy landscape without wasting water.

Visit WaterSense at www.epa.gov/watersense to watch a video and learn more about how you—or a certified professional—can inspect, connect, direct and select your way to a smarter system.